

# **The Consortium: South Office**

## **Designer of Professional Learning Catalog**

### **2025-2026**

*We are committed to helping you meet your professional learning needs throughout the region in an affordable manner. With one provincial consortia office, six regional offices, and over 100 school divisions, our role is to bring Alberta's best educators and resources together - into your school and your classroom.*

# Shelly Read

## *Math K-12*

Shelly is a Faculty of Education graduate from the University of Lethbridge. She also holds an Associate Degree from Trinity Lutheran College in Seattle and most recently completed her Leadership Certification.

Shelly started her career in the Prairie Rose School Division where she spent 6 years teaching various K-9 curricula in Acadia Valley and Oyen. She then moved to Foothills School Division where she has held multiple roles at the school and divisional level including classroom teacher, Bridges Teacher, CASA Classroom Teacher, Learning Support Teacher, Instructional Learning Coach, Divisional K-12 Numeracy Facilitator, and Divisional K-6 New Curriculum Lead for Math and Science.

Shelly is passionate about math practices that develop positive mathematical mindsets, where math is considered more than just an answer on a page.

### Areas of Focus:

- Math 7 - 9: New Curriculum Architecture and Design
- Math K - 6





# Rick Gilson

## *Social Studies & Technology*

With 39 years in education, Rick now supports professional learning as a DPL. He has taught English, Social Studies, and various other subjects, including Computers, CALM, and IB Theory of Knowledge.

His leadership experience includes 14 years as a high school administrator, six years at the central office—five as Assistant Superintendent—and six years as SAPDC Director (now The Consortium: South Office).

A lifelong learner and avid reader, Rick is passionate about coaching, teaching, and supporting personal and professional growth. He co-hosts The Consortium's Podcast and shares his love of reading through his YouTube series, Read by Grandpa. His key focus areas include literacy, inclusion, social studies, wellness, and leadership.



### Areas of Focus:

- Tiny Habits Coach
- Leadership
- Social Studies (New Curriculum)
- AI Classroom Integration

# Bev Smith

## *Literacy*

Bev Smith is a Designer of Professional Learning with the South Office of The Consortium. Bev has been an educator for 39 years. She taught all grades from Kindergarten through Grade 6. After leaving the classroom, Bev worked as the Literacy Lead in school districts prior to adding English as an Additional Language Lead.

Bev holds a Master of Education degree from the U of L with a focus in Literacy. She believes that learning is a social endeavor and that together we maximize our potential as teachers for the success of every student. Bev is passionate about creating communities of readers, writers, and thinkers where all students are able to engage and learn.



### Areas of Focus:

- Building Strong Readers: Foundational Skills & Effective Practices for K-6 Teachers
- Assessment for Learning in Literacy, K-12
- Unlocking Comprehension: Building Background Knowledge and Vocabulary
- Structuring a Comprehensive Literacy Block
- Bringing It All Together: Integrating ELAL Instruction Cohesively
- Unlocking Literacy: Empowering Early Readers with Decodable and Predictable Texts, K-2
- All About SIOP: Sheltered Instruction Observation Protocol, K-12
- Language Rich Classrooms: Supporting Language Acquisition Through Comprehensible Input and Vocabulary Development
- Elbow-to-Elbow Coaching and Planning with Individual or Small Groups of Teachers



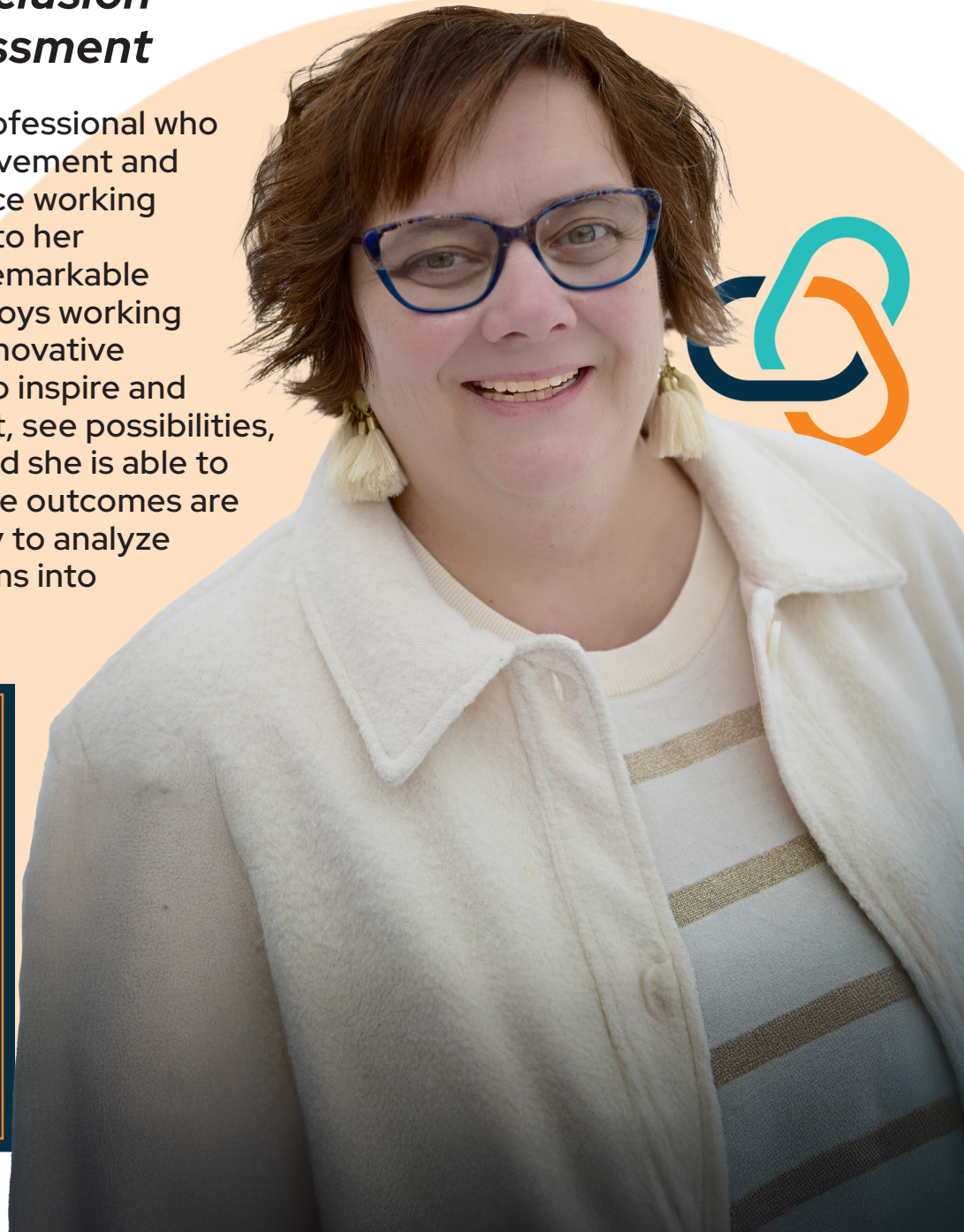
# Adelee Penner

## *Leadership, Pedagogy, Inclusion & Assessment*

Adelee Penner is a highly sought-after consulting professional who has demonstrated her ability to realize system improvement and change disruption. She brings her practical experience working with teachers and school-based and district leaders to her project consultation/work. Adelee is able to create remarkable outcomes through her unshakable optimism. She enjoys working alongside leaders as she believes we can shape an innovative future together. Adelee's strengths lie in her ability to inspire and motivate people to achieve meaningful improvement, see possibilities, and create opportunities; she is a systems thinker, and she is able to craft meaningful processes through which remarkable outcomes are possible. Through her visionary leadership and ability to analyze and assess multiple data sources, she can coach teams into actioning their potential.

### Areas of Focus:

- Building and Sustaining Quality Future-Ready Educational Leadership
- Assessment Routines in Support of Positive Mental Health
- "Thinking Routines" to support assessment-capable students.
- Supporting Leaders with Assessment
- Principal/Assistant Principal and/or Aspiring Leaders - Series
- The Science of Stakeholder Engagement
- Think Like a Scientist
- The Trauma-Informed Educator: Creating Safe & Supportive Classrooms That Help All Students Thrive



# Kathy Charchun

## *FNMI Resource Development*

Kathy Charchun has been an educator for 36 years, serving as a teacher, principal, K-12 Divisional Numeracy Lead, and School Board Trustee. She has supported educators across Alberta in K-12 mathematics and numeracy as a Designer of Professional Learning with APLC.

Kathy is passionate about fostering highly effective teaching practices, valuing the power of collaboration, and championing success for all students in culturally appropriate and inclusive learning environments. She is dedicated to finding innovative ways to support teacher growth, enhance student achievement, and inspire a lifelong love of learning.

As part of her ongoing path of Truth and Reconciliation, Kathy has the privilege and honour of working with the First Nations, Métis and Inuit committee. Together, their work includes bringing the Blackfoot perspective to the provincial Indigenous Culture-Based Learning in Alberta Curriculum website—reflecting a shared commitment to honouring Indigenous voices, supporting authentic representation, and helping educators learn with Indigenous ways of knowing.

### Areas of Focus:

- First Nations, Metis, & Inuit - Advisory Committee and Resource Development
- Math K - 12





# Shelley Kirkvold

## *Social Studies & FNMI Resource Development*

Passionate about building respectful relationships with First Nations, Métis, and Inuit peoples, Shelley continues her personal and professional journey of reconciliation by collaborating with Elders, Knowledge Keepers, and non-Indigenous educators to bring authentic teachings and resources into classrooms.

Shelley is committed to infusing Indigenous perspectives and ways of knowing into the curriculum, with a particular passion for social studies. Through the wisdom shared by Elders and Knowledge Keepers, she inspires others to approach history and society with curiosity, understanding, and respect. She was honored by Elder Dorothy Day Chief with the Blackfoot name Kakatosana'ksi (Star Singing Woman), a recognition that carries the responsibility of advocacy, respect, and service.

Recently retired from her role as Coordinator of Indigenous Education with Holy Spirit Schools, Shelley continues to embrace opportunities for growth as a lifelong learner. Grateful for the guidance and relationships that have shaped her journey, she remains dedicated to supporting educators in creating inclusive, culturally responsive learning environments.

### **Areas of Focus:**

- FNMI Professional Learning and Resource Development K-12
- Social Studies: Curriculum K-12



# Shannon Fraser

## *Inclusive Ed & EA Support*

Shannon Fraser brings over 25 years of experience supporting individuals in mental health and educational settings. Throughout her career, she has held impactful roles such as Child and Youth Care Worker in classrooms, Behaviour Support Worker, Family School Liaison Counsellor, and, most recently, Career Practitioner, where she helps students navigate their paths toward fulfilling futures.

Shannon's extensive background has shaped her commitment to empowering frontline professionals through ongoing learning and development. She is passionate about ensuring educators and support workers feel supported and equipped to meet the evolving needs of students in today's dynamic world.



### Areas of Focus:

- Educational Assistant /Child and Youth Care Worker
- Supporting Challenging Behaviour
- Wellness, Selfcare
- Connecting students to their passions and talents



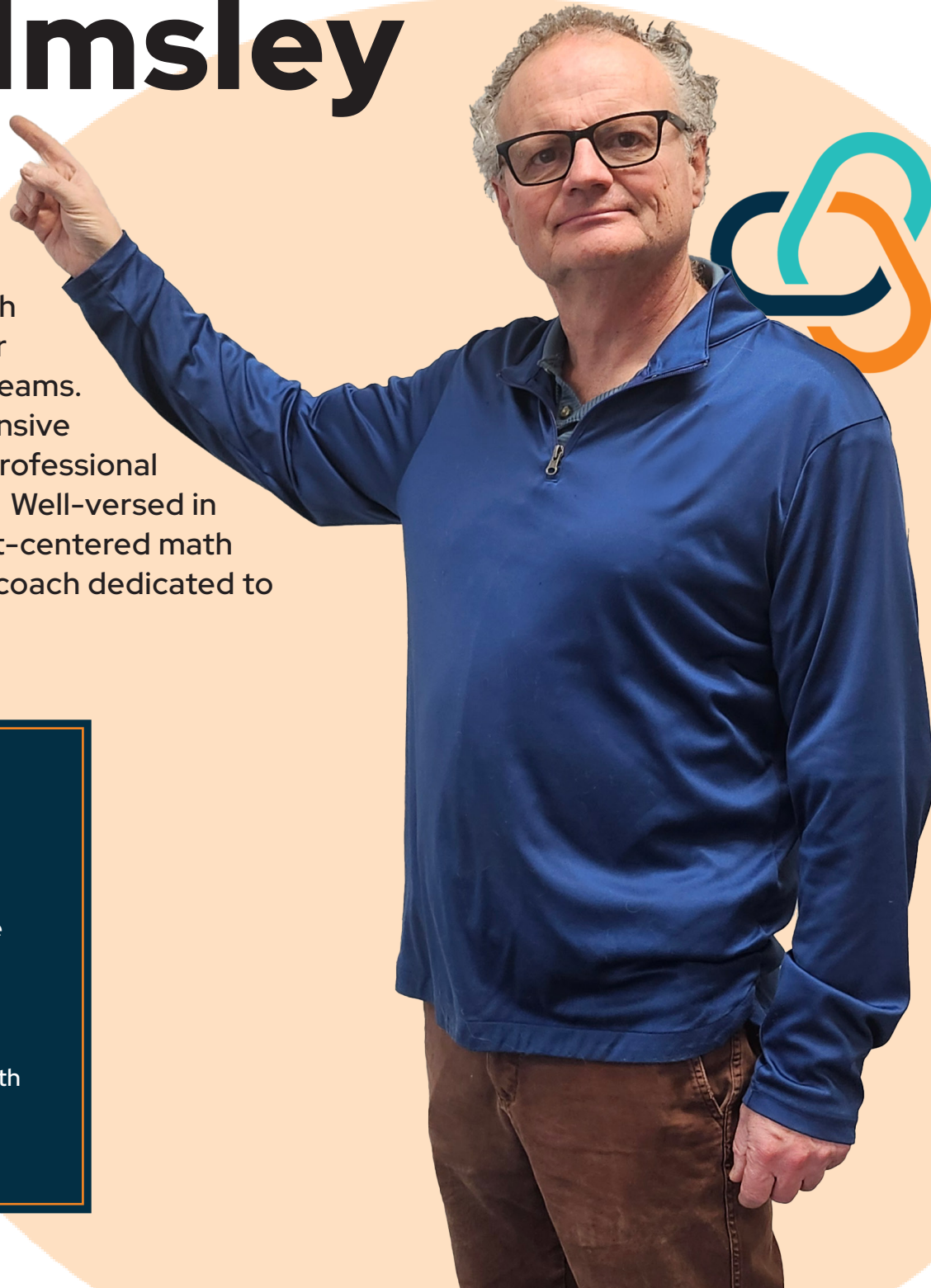
# Andrew Walmsley

## *Math K-6*

Andrew Walmsley recently retired after 37 years teaching elementary and middle school. For much of that time he was his school's math lead teacher and was a member of many divisional numeracy teams. He is a creative, and effective educator with extensive experience in elementary classroom pedagogy, professional development, and collaborative team leadership. Well-versed in diverse educational environments, he is a student-centered math instructor, academic facilitator, and motivational coach dedicated to fostering engagement and success.

### Areas of Focus:

- Using Manipulatives Effectively
- Math Openers
- Teaching Counting to Beginning Mathematicians
- Moving young mathematicians from counting to additive thinking
- Moving young mathematicians from additive thinking to multiplicative thinking strategies
- How to Use Number Talks and Problem Strings in the Math Classroom
  - Teaching Fractions



# Contact Us

## General Inquiries

For questions about our professional development sessions, presenter availability, or registration, please reach out to us:

Email: [south@aplc.ca](mailto:south@aplc.ca)

Phone: (403) 381-5580

Website: <https://south.aplc.ca/>

*\*If you have questions about a particular presenter, please mention the their name when reaching out.*

## Follow Us

Stay updated on upcoming sessions and new learning opportunities:

Twitter/X: [https://x.com/sapdc\\_info](https://x.com/sapdc_info)

Facebook: <https://www.facebook.com/southofficeconsortium>

## Mailing Address

The Consortium: South Office  
2219 14 Ave S  
Lethbridge, AB, T1K 0V6